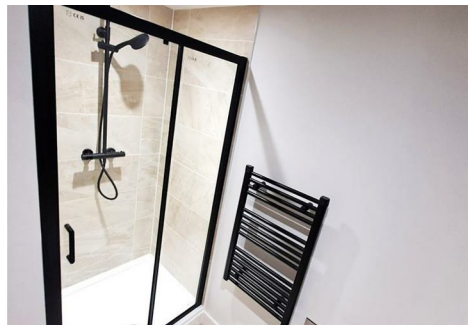




ASPIRE RESIDENTIAL

Service | Expertise | Accountability



Triskelion Way, Liverpool

£900 Per Month



1



1



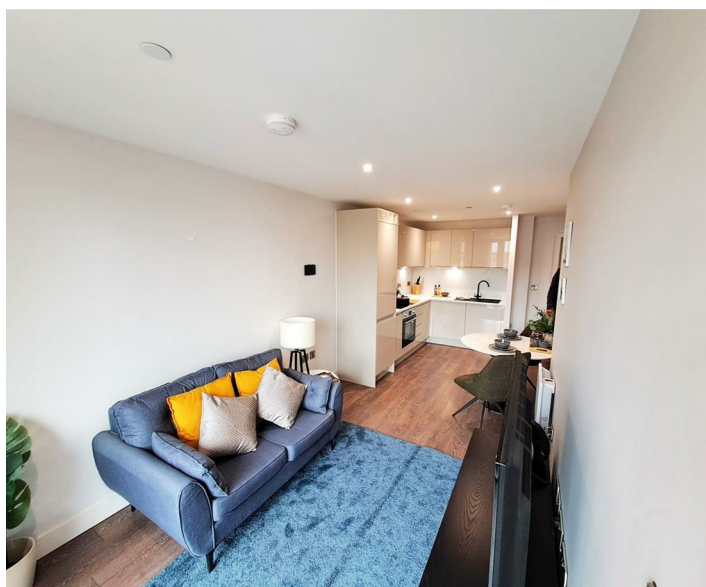
1

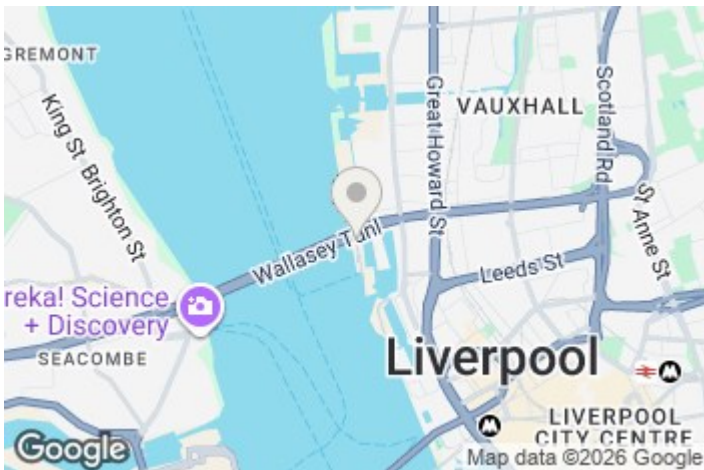


C

Council Tax Band: New
Build

- *Stunning One Bedroom Apartment
- *Modern integrated kitchens with energy-efficient appliances
- *Fob-access entry with intercom security
- *No Parking Included
- *Images are for marketing purposes only
- *Waterfront at Liverpool Waters (West Waterloo Place)
- *Smart home tech, high-speed WiFi (up to 300 Mbps), and digital thermostats
- *Available to move in September 2025
- *Please call or email us today
- *EPC Rating C





EPC Rating:
C

Energy Efficiency Rating		
	Current	Potential
Very energy efficient - lower running costs		
(92 plus) A		
(81-91) B		
(69-80) C	79	79
(55-68) D		
(39-54) E		
(21-38) F		
(1-20) G		
Not energy efficient - higher running costs		
England & Wales	EU Directive 2002/91/EC	

Aspire Residential | Liverpool

Park Central
11a Jesse Hartley Way
Liverpool
L3 0AY

Telephone: 0151 203 5000

Email: liverpool@aspireresidential.co.uk



Aspire Residential is a trading name of Aspire Residential (North) Limited, a Company Incorporated and Registered in England and Wales with Company Number 12658947 and VAT Number 381231616 and whose registered office address is Park Central, 11a Jesse Hartley Way, Liverpool, L3 0AY.

IMPORTANT NOTICE TO PURCHASERS: We endeavour to make our sales particulars accurate and reliable, however, they do not constitute or form part of an offer or any contract and none is to be relied upon as statements of representation or fact. The services, systems and appliances listed in this specification have not been tested by us and no guarantees as to their operating ability or efficiency are given. All measurements have been taken as a guide to prospective buyers only, and are not precise. If you require clarification or further information on any points, please contact us, especially if you are traveling some distance to view.